

Graduate School of Global Information and Telecommunication Studies (GITS)  
Waseda University

## openEHR based Maternity Record System for Use in Cambodia

Hok Kakada ([hokkakada@gmail.com](mailto:hokkakada@gmail.com))  
KANO Sadahiko ([kanos@waseda.jp](mailto:kanos@waseda.jp))

14 May, 2010

1

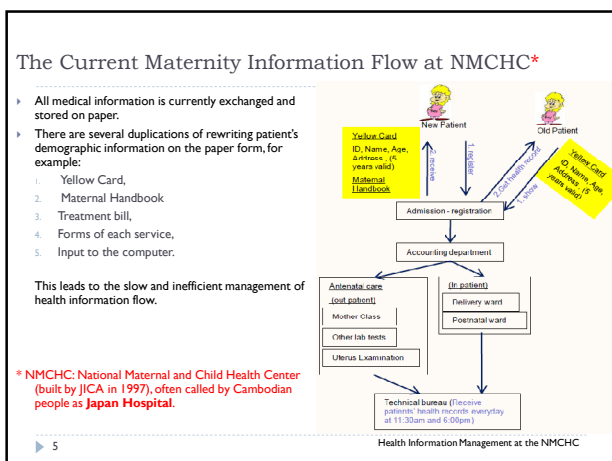
## Contents

- ▶ Objectives of the Research Study
- ▶ Reasons for Choosing Maternity Care
  - ▶ The Maternity Care Status in Cambodia
  - ▶ The current paper based maternity medical record system
- ▶ An Example of the Current Medical Record System at the National Maternal and Child Health Center (NMCHC)
  - ▶ The Current Maternity Information Flow
- ▶ List of Archetypes and templates for use in Maternity Care
- ▶ Conclusion

▶ 2

- ### Objectives of the Research Study
- ▶ To identify the flow of medical information regarding maternity care. A case study is done at the National Maternal and Child Health Center (NMCHC) in Phnom Penh;
  - ▶ To identify the issues and challenges in developing EHRs;
  - ▶ To design and provide an openEHR based Maternity care EHR System;
  - ▶ To identify problems if EHRs have to be adopted in the hospital;
  - ▶ and finally, to set a clue if maternity EHRs will replace maternal handbook.
- ▶ 3

- ### The Maternity Care Status in Cambodia
- ▶ Population: 15 million, roughly 20% of total population living in capital city, Phnom Penh
  - ▶ Annual population growth: 1.8%
  - ▶ Total fertility rate: 3.3
  - ▶ Every year more than 2,000 women die of maternity-related complications
  - ▶ Over half of mothers do not receive any health care during their pregnancy.
  - ▶ There are significant regional differences in antenatal care:
    - ▶ 84% of expectant mothers in Phnom Penh come to health care facilities
    - ▶ Out of Phnom Penh, the proportion of births delivered in health facilities is low in all regions (14% or less). 66% of childbirths are assisted by traditional birth attendants (TBAs).
  - ▶ The current maternity medical record system is paper based.
- ▶ 4



### Maternity Steps

1 <sup>st</sup> Step: First Visit	2 <sup>nd</sup> Step: Uterus Examination	3 <sup>rd</sup> Step: Delivery	4 <sup>th</sup> Step: Postnatal Record
Date of LMP The month of the first fetus movement Expected date of birth Mother's height less than 1,45m Number of delivery=0 or >5 Age<17 or >35 First pregnancy age>29 Under-TB treatment Syphilis test Problems found during last pregnancy	Week of Gestation Weight Blood Pressure Fundus Height Heart Rate Protein in urine Glucose in urine Complications Treatment Date of next visit	Number of fetuses Labour Type Off spring Date of delivery Gender Birth Weight Length Chest Circumference Head Circumference Intervention	Check-up Date Mother condition Affecting diseases? breast-feed her baby? Mother's breast Baby condition Baby's Bowel is ok? Baby drink well? Baby seems painful? Apgar score Other problems...

All these concepts could not be found in the current archetypes repository

◆ Based on these 4 steps, 4 Templates will be created accordingly.

▶ 6

## Review of existing archetypes regarding "Maternity Care"

### List of current archetypes specifically concerning "Maternity Care"

Template	List of Available Archetypes in openEHR Repository	Evaluation
First Visit	1. openEHR-EHR-EVALUATION.pregnancy.v1 (specialized)	Not good for our purpose Need new archetypes
Uterus Examination	1. openEHR-EHR-OBSERVATION.exam.v1 2. openEHR-EHR-CLUSTER.exam-uterus.v1 3. openEHR-EHR-CLUSTER.exam-fetus.v1 4. openEHR-EHR-OBSERVATION.urinalysis.v1 5. openEHR-EHR-INSTRUCTION.follow_up.v1 6. openEHR-EHR-OBSERVATION.blood_pressure.v1 7. openEHR-EHR-OBSERVATION.body_weight.v1 8. openEHR-EHR-OBSERVATION.heart_rate.v1	Good enough for our purpose
Delivery	1. openEHR-EHR-EVALUATION.pregnancy.v1 (specialized)	Not good for our purpose Need modifications
Postnatal	1. openEHR-EHR-OBSERVATION.body_temperature.v1 2. openEHR-EHR-OBSERVATION.apgar.v1 3. openEHR-EHR-OBSERVATION.heart_rate.v1	Not good for our purpose Need new archetypes

### 3 Archetypes used for "Pregnancy: First Visit" Template

openEHR-EHR-COMPOSITION.encounter.v1 (Exists in the current openEHR Repository)

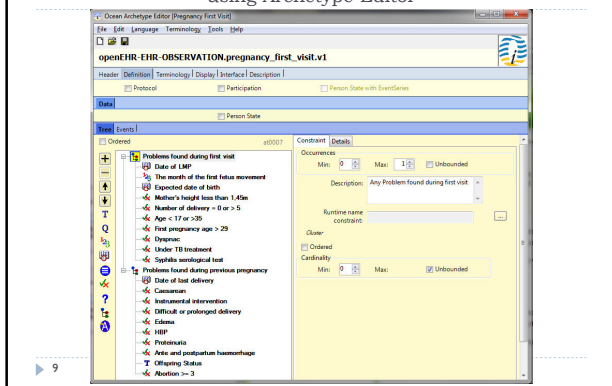
openEHR-EHR-OBSERVATION.pregnancy\_first\_visit.v1 (Newly created)

**Date of LMP**  
**The month of the first fetus movement**  
**Expected date of birth**  
**Mother's height less than 1,45m**  
**Number of delivery=0 or >5**  
**Age<17 or >35**  
**First pregnancy age>29**  
**Under TB treatment**  
**Syphilis test**  
**Problems found during last pregnancy**  
**Date of last delivery**  
**Caesarean**  
**Instrument Intervention**  
**Edema**  
**Offspring status**  
**Abortion>=3**

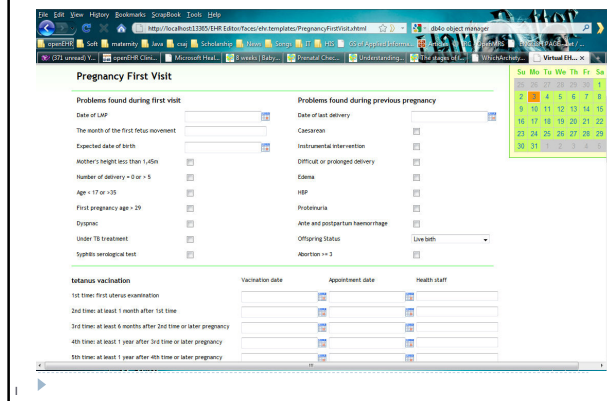
**openEHR-EHR-INSTRUCTION.tetanus\_vaccination.v1 (Newly created)**

**Tetanus Vaccination**  
**Vaccination date**  
**Next appointment date**  
**Health staff**

### An Example of Creating "openEHR-EHR-OBSERVATION.pregnancy\_first\_visit.v1" USING Archetype Editor



### Screenshot of Newly Created Template: "Pregnancy: First Visit"

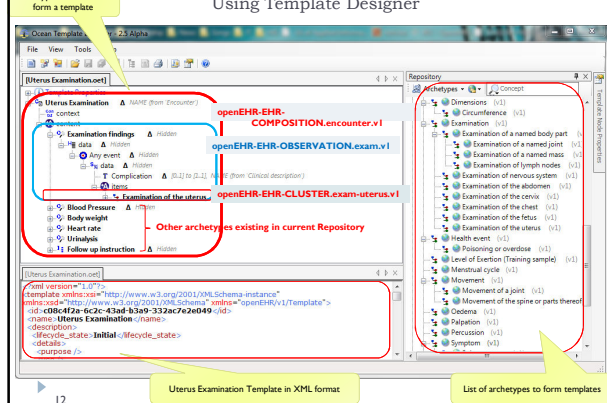


### List of 9 Archetypes used for "Uterus Examination" Template

Archetypes	Existing in Repository	under Reviewed	approved by ARB
1. openEHR-EHR-COMPOSITION.encounter.v1	✓		
2. openEHR-EHR-OBSERVATION.exam.v1			
3. openEHR-EHR-CLUSTER.exam-uterus.v1			
4. openEHR-EHR-CLUSTER.exam-fetus.v1			
5. openEHR-EHR-OBSERVATION.urinalysis.v1			
6. openEHR-EHR-INSTRUCTION.follow_up.v1			
1. openEHR-EHR-OBSERVATION.blood_pressure.v1	✓		✓
2. openEHR-EHR-OBSERVATION.body_weight.v1			
1. openEHR-EHR-OBSERVATION.heart_rate.v1	✓	✓	

❖ No new Archetypes were created for this Template

### An Example of Designing "Uterus Examination" Template Using Template Designer



### Screenshot of Newly Created Template: Uterus Examination

### Additions to "Pregnancy" Archetype to be used in "Delivery" Template, to be proposed to ARB

### Screenshot of Newly Created Template: Delivery

Archetypes	Existing in Repository	under Reviewed	approved by ARB	Modified	Newly Created
1. openEHR-EHR-COMPOSITION.encounter.v1	✓				
1. openEHR-EHR-EVALUATION.pregnancy.v1 (specialized)				✓	

**Delivery** | Maternity states

Number of fetuses: [ ] Labour or delivery

Gestation: [ ] wk Comments: [ ]

Planned model of d: [ ] Type: [ ]

Model of care at d: [ ] Time of onset: [ ]

Rupture of membrane: [ ] Augmentation: [ ]

Type: [ ] Type: [ ]

Time of rupture: [ ] Time of augmentation: [ ]

Duration of rupture: [ ] day(s) Duration of woman: [ ] hr

Description of liquor: [ ] Duration: [ ] day(s)

**Offspring**

Outcome: [ ] Intervention: [ ]

Name: [ ] Type: [ ]

Date of delivery: [ ] Status: [ ]

Gender: [ ] Successful: [ ]

Birth weight: [ ] gm Indication: [ ]

Length: [ ] cm Description: [ ]

### List of 5 Archetypes used in "Postnatal Record" Template

Archetypes	Existing in Repository	under Reviewed	approved by ARB	Newly Created
1. openEHR-EHR-COMPOSITION.encounter.v1	✓			
1. openEHR-EHR-OBSERVATION.body_temperature.v1	✓		✓	
2. openEHR-EHR-OBSERVATION.apgar.v1				
1. openEHR-EHR-OBSERVATION.heart_rate.v1	✓	✓		
1. openEHR-EHR-OBSERVATION.postnatal_maternity.v1				✓

16 ARB = Archetype Review Board

### Screenshot of Newly Created Template: Postnatal Record

**Offspring**

Apgar score: [ ] 1 minute [ ] 5 minute [ ] 10 minute [ ]

Heart rate: [ ]

Breathing: [ ]

Muscle tone: [ ]

Reflex response: [ ]

Colour: [ ]

Total: [ ]

Baby's status: [ ]

Nursing ability of [ ]

Baby's bowel is ok [ ]

Does the baby seem [ ]

**Mother**

Check-up Date: [ ]

Affecting diseases: [ ]

Does the mother breastfeed: [ ]

Mother's breast: [ ]

Temperature: [ ] °C

### Maternity EHR System

“That Archetypes are Reusable” is Proved

Template	List of Archetype
First Visit	<ol style="list-style-type: none"> <li>openEHR-EHR-COMPOSITION.encounter.v1</li> <li>openEHR-EHR-OBSERVATION.pregnancy_first_visit.v1</li> <li>openEHR-EHR-INSTRUCTION.tetanus_vaccination.v1</li> </ol>
Uterus Examination	<ol style="list-style-type: none"> <li>openEHR-EHR-COMPOSITION.encounter.v1</li> <li>openEHR-EHR-OBSERVATION.exam.v1</li> <li>openEHR-EHR-CLUSTER.exam-uterus.v1</li> <li>openEHR-EHR-CLUSTER.exam-fetus.v1</li> <li>openEHR-EHR-OBSERVATION.urinalysis.v1</li> <li>openEHR-EHR-INSTRUCTION.follow_up.v1</li> <li>openEHR-EHR-OBSERVATION.blood_pressure.v1</li> <li>openEHR-EHR-OBSERVATION.body_weight.v1</li> <li>openEHR-EHR-OBSERVATION.heart_rate.v1</li> </ol>
Delivery	<ol style="list-style-type: none"> <li>openEHR-EHR-COMPOSITION.encounter.v1</li> <li>openEHR-EHR-EVALUATION.pregnancy.v1 (specialized)</li> </ol>
Postnatal	<ol style="list-style-type: none"> <li>openEHR-EHR-COMPOSITION.encounter.v1</li> <li>openEHR-EHR-OBSERVATION.body_temperature.v1</li> <li>openEHR-EHR-OBSERVATION.appgr.v1</li> <li>openEHR-EHR-OBSERVATION.heart_rate.v1</li> <li>openEHR-EHR-OBSERVATION.postnatal_maternity.v1</li> </ol>

Summary: List of 15 Archetypes used for the current Maternity Record (As of May 2010)

Archetypes	Existing in Repository	under Reviewed	approved by ARB	Modified	Newly Created
<ol style="list-style-type: none"> <li>openEHR-EHR-COMPOSITION.encounter.v1</li> <li>openEHR-EHR-OBSERVATION.exam.v1</li> <li>openEHR-EHR-CLUSTER.exam-uterus.v1</li> <li>openEHR-EHR-CLUSTER.exam-fetus.v1</li> <li>openEHR-EHR-OBSERVATION.urinalysis.v1</li> <li>openEHR-EHR-INSTRUCTION.follow_up.v1</li> </ol>	√				
<ol style="list-style-type: none"> <li>openEHR-EHR-OBSERVATION.body_temperature.v1</li> <li>openEHR-EHR-OBSERVATION.appgr.v1</li> <li>openEHR-EHR-OBSERVATION.blood_pressure.v1</li> <li>openEHR-EHR-OBSERVATION.body_weight.v1</li> </ol>	√		√		
<ol style="list-style-type: none"> <li>openEHR-EHR-OBSERVATION.heart_rate.v1</li> </ol>	√	√			
<ol style="list-style-type: none"> <li>openEHR-EHR-OBSERVATION.postnatal_maternity.v1</li> <li>openEHR-EHR-INSTRUCTION.pregnancy_first_visit.v1</li> <li>openEHR-EHR-INSTRUCTION.tetanus_vaccination.v1</li> </ol>					√
<ol style="list-style-type: none"> <li>openEHR-EHR-EVALUATION.pregnancy.v1</li> </ol>	√			√	

Further Activities

- ▶ To Develop Maternity EHR System in Cambodia:
  - ▶ Do experiment of openEHR based Maternity Record System at Japan Hospital, as the first step
- ▶ To Contribute to openEHR Community:
  - ▶ Join Archetype discussion on openEHR Clinical Knowledge Manager: <http://www.openehr.org/knowledge/>
  - ▶ Submit newly created archetypes to CKM for review by ARB
  - ▶ Create new templates and submit to CKM for reference
  - ▶ Help review the current draft archetypes and templates

Conclusion

- ▶ Merits
  - ▶ Archetypes and templates illustrated above show a strong basis for developing EHR.
  - ▶ As the archetypes and templates can be easily created, those new needed templates can be added to the existing EHR System in the future.
  - ▶ The feedback from the experiment at Japan Hospital, will help improve the quality of existing templates, or create new templates, if needed.
  - ▶ As the Japan Hospital is a National hospital specializing in obstetrics-gynecology, the positive feedback from this hospital will also have influence on other public and private hospitals to introduce the openEHR based maternity EHR System to their hospitals
- ▶ Issues for further study
  - ▶ The level of lab tests in maternity care may be different based on the available resources of each hospital or health center.
  - ▶ Therefore, the four above created templates may not be sufficient to serve other maternity hospitals or health centers

Thank you